

SPECIFICATION

Input Port	4xHDMI(Female connector), 1xUSB
Output Port	1xHDMI(Female connector), 1xIR Channel
Bandwidth	10.2Gbps
Output Resolution	480i~1080P@50/60,1080P@24/50/60, VGA~UXGA
Operating Temperature	-15°C~55°C/5°F~131°F
Deep Color	36bit
Chassis	ABS Shell
Dimension	110mm(L)x60mm(W)x13.5mm(H)
Weight	67g

SAFETY PRECAUTIONS

Please read the following safety precautions carefully before you unpack and install this equipment.

1. Do not expose the unit to rain, moisture or any other dripping liquids. And keep it away from any wet locations such as fish tanks, vases.
2. Do not install the unit close to fire or any other heat sources.
3. Keep the unit in dry and ventilated area. Do not install in bookcase, cabinet or any other confined space.
4. Stop using the unit during thunder or lightening storms.
5. Avoid the power cable to being stepped on or pinched. Position the unit carefully to avoid damage or accident.
6. Clean the unit only with dry cloth.
7. Only use accessories specified by the manufacturer.
8. Unplug the equipment when unused for a long period of time.
9. Do not try to open any non-serviceable parts. Contact your authorized servicing center and personnel.



Full 3D Pass-through
Support IR Control
Ultra HD 4K X 2K

4x1 HDMI Switch

MSW41NN00RK

User Manual

INTRODUCTION

This super slim 4x1 HDMI switch offers you a great way to tidy up your home theater. It allows you to connect up to 4 HD sources, and you can switch the HD sources very conveniently by using the easy-click switch button on the unit or the included IR remote. Furthermore, the bi-directional IR control function enables to control your devices more conveniently. The system is compatible with HDMI 1.4V, 3D and 4K ultra HD.

The switch does not need for power supply; however, if your HDMI source could not provide sufficient power, then you can connect the switch to an external power source using the supplied USB cable.

PACKAGE CONTENTS

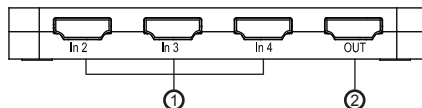
- 1 x HDMI switch unit
- 1 x Remote
- 1 x 3ft USB A to micro cable
- 1 x User Manual

FEATURES

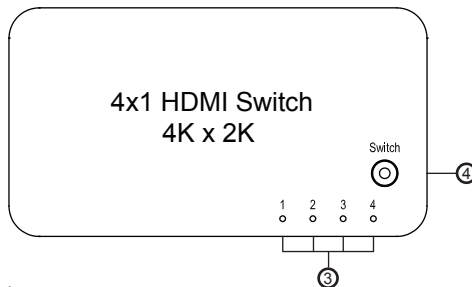
- HDMI, HDCP 1.2 and DVI compliant
- Support full 3D pass-through
- Support 4k x 2k high resolution
- Support IR control
- Support CEC bypass
- External and internal EDID settings

PANEL DESCRIPTION

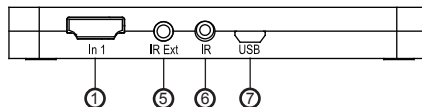
Rear Panel



Top Panel



Front Panel



- ① HDMI INPUT
- ② HDMI OUTPUT
- ③ HDMI INPUT LED
- ④ SOURCE SELECTION BUTTON
- ⑤ IR EXTENSION OUTPUT
- ⑥ IR OUTPUT
- ⑦ USB PORT

INSTALLATION

- Connect HDMI input ports to the HD signal source equipments such as DVD player, Blue-ray player, Set-top box etc.
- Connect HDMI output port to the HDMI display.
- You can control the device using the supplied Remote by pointing to the built-in IR sensor.
- Connect to the IR Ext output with the IR receiver cable (optional) if you need to extend the distance of using the remote.
- Connect IR port with the IR blaster cable (not included in the package) for IR signal transmission. Place the IR blaster in direct line-of-sight of the equipment to be controlled.
- Connect the IR receiver cable (not included in the package) for IR signal reception. An adaptor is needed for connection. Make sure that the remote being used is in direct line-of-sight of the IR receiver.
- In case your HDMI source could not provide sufficient power, you can use the supplied cable and connect to your existing device for getting power to the unit.

CONNECTION DIAGRAM

